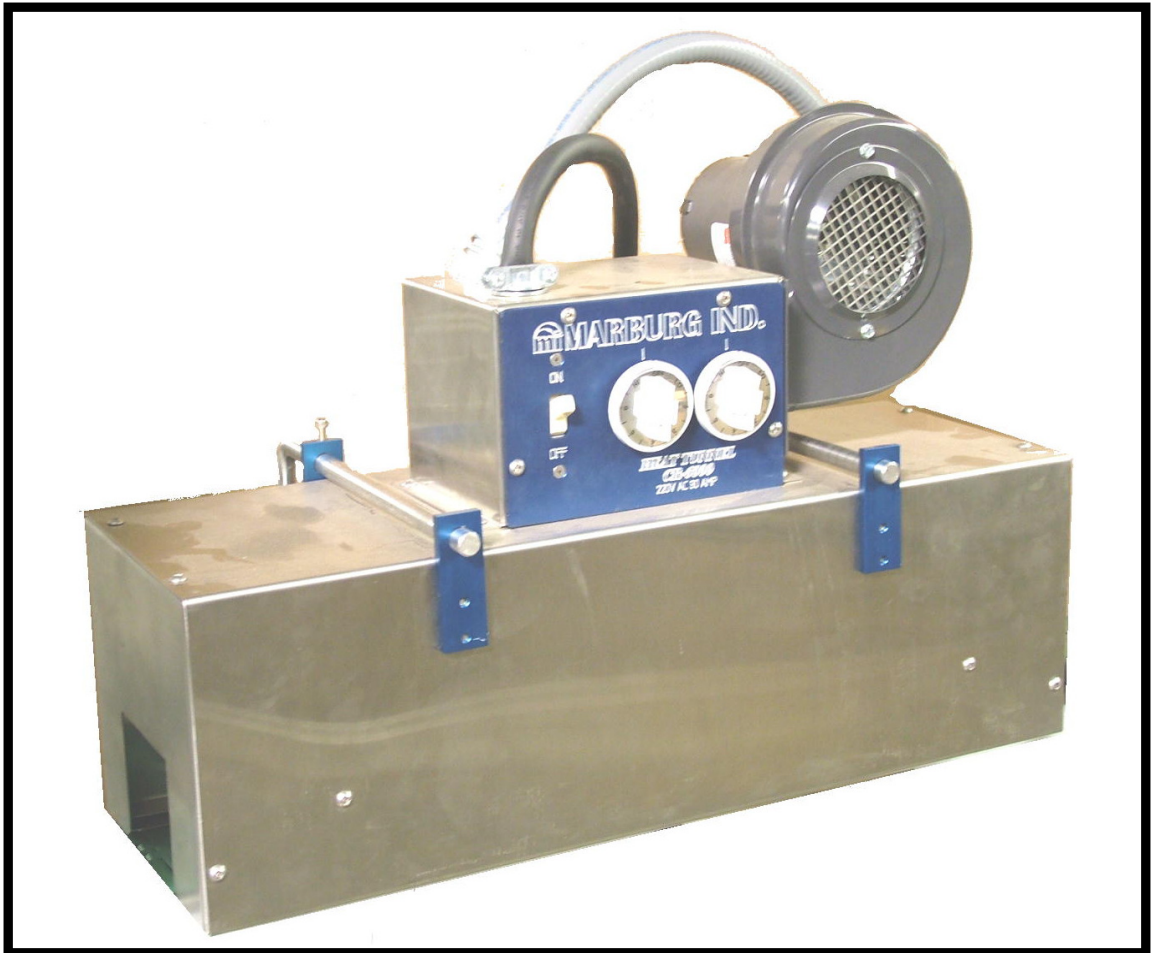


HEAT-SHRINK TUNNEL

(MARBURG Industries Inc.)



DATA SHEET

HEAT TUNNEL

Volt: 240 VAC
Amp: 30 A
Phase: 1
Freq.: 50/60 Hz
Power: 6000 W
Length: 22 inch.
Height:
Height Adjust: 10 inch.
Base: Stainless Steel
Other Spec: GMP

FAN MOTOR

Company: Dayton
Model: 2C915A
No: 7021-3483
HP: 1/30
RPM: 3020
Volt: 240 V AC
Freq.: 50/60 Hz
Amp: 0.58 A/0.54 A
Type: V21B
Class: B
Amb: 40 C
Protect: Thermally Protected

ELECTROSTATIC POTENTIOMETER

INF 240 96
CH 252 CSA 0035DM
Volt: 240 V AC
Amp: 15 A

HEAT-SHRINK TUNNEL

- Stainless Steel Construction
- Flow-through ventilation

This productive unit uses standard PVC heat-shrink stock on a wide variety of bottle shapes and sizes for tamper-evident packaging.

The tunnel is a totally enclosed unit with dual controls, for greater flexibility. It operates on 240 VAC and uses two 3000 Watt Cal Rods as the heat source. With flow-through ventilation, hot air is used to lock the band in place and radiant heat is used for finish shrink.

The compact unit is only 22 inches long, which eliminates the need for a lengthy conveyor. Installation is easily done by your in-house staff using standard tools.

“Comes complete with mounting brackets.”

START-UP AND SHUT DOWN

START-UP

TO START THE SHRINK TUNNEL, SIMPLY PUSH THE POWER SWITCH ON THE SHRINK TUNNEL CONTROL PANEL TO THE ON POSITION. THIS WILL ACTIVATE THE HEATING ELEMENTS. THE SHRINK TUNNEL TEMPERATURE WILL RISE TO THE TEMPERATURE SETTING ON THE THERMOSTATIC POTENTIOMETER ON THE SHRINK TUNNEL CONTROL PANEL. TO CHANGE THE TEMPERATURE FROM LOW TO HIGH –TURN THE THERMOSTATIC POTENTIOMETER TO THE RIGHT (CLOCKWISE).

SHUT DOWN

TO SHUT DOWN THE SHRINK TUNNEL, SIMPLY PUSH THE POWER SWITCH ON THE SHRINK TUNNEL CONTROL PANEL TO THE OFF POSITION. THIS WILL CUT OFF THE POWER TO THE HEATING ELEMENTS.

CAUTION:

BEFORE ANY WORK IS TO BE DONE ON THE SHRINK TUNNEL TURN ALL SWITCHES TO THE OFF POSITION, AND DISCONNECT THE MAIN POWER SUPPLY.

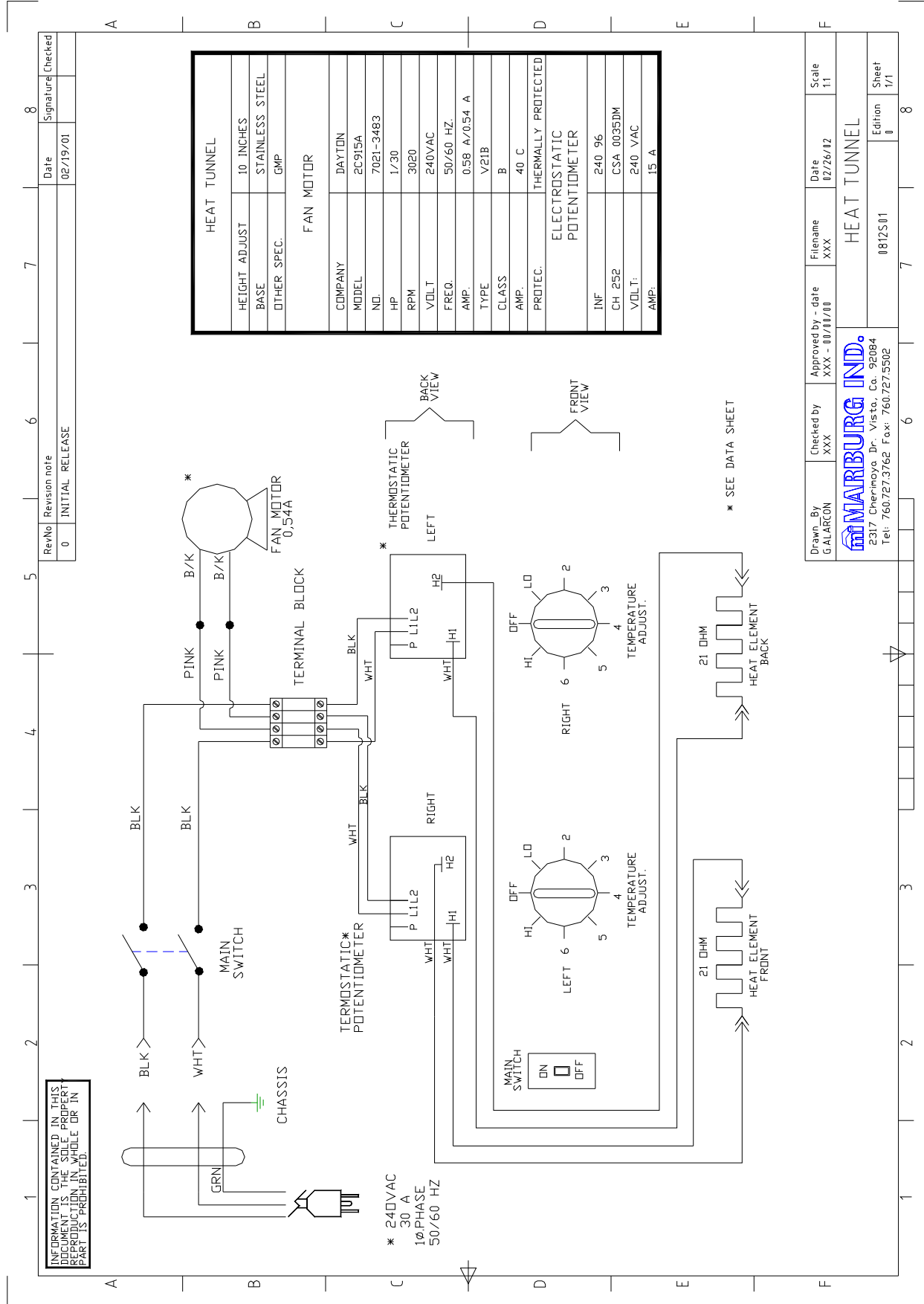
WARNING

FAILURE TO INSTALL, SERVICE AND OPERATE THIS TUNNEL IN ACCORDANCE WITH PROPER ENGINEERING AND SAFETY TECHNIQUES MAY RESULT IN SERIOUS BODILY INJURY.

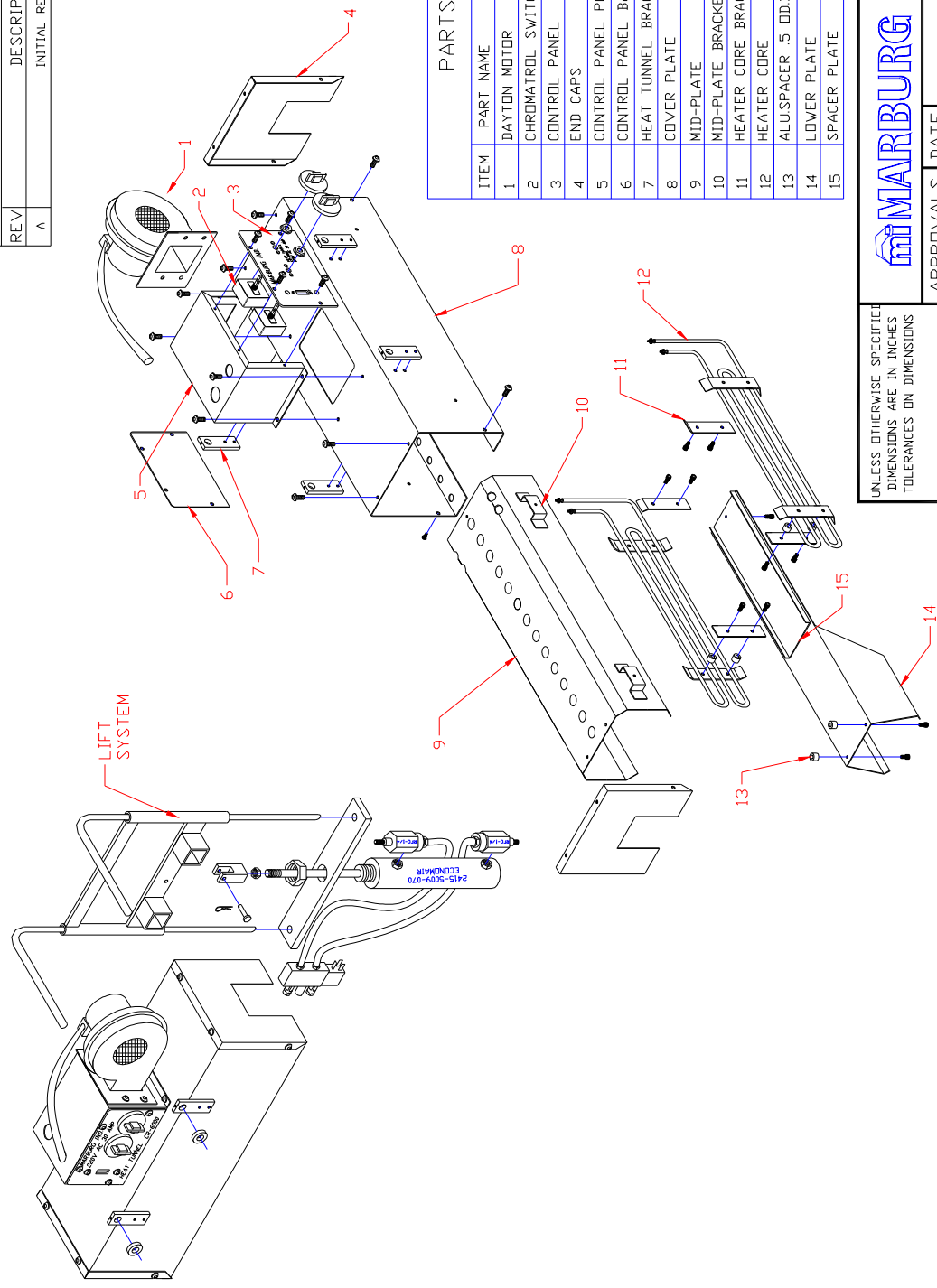
CAUTION

BEFORE ANY WORK IS TO BE DONE ON THE TUNNEL TURN THE POWER ON/OFF SWITCH TO THE OFF POSITION. ALLOW THE TUNNEL TO COOL DOWN PROPERLY, AND THEN DISCONNECT THE MAIN POWER SUPPLY CORD.

HEAT TUNNEL ELECTRICAL SCHEMATIC



REVISIONS			
REV	DESCRIPTION	DATE	APPROVED
A	INITIAL RELEASE		



PARTS LIST			
ITEM	PART NAME	PART NDL	QTY.
1	DAYTON MOTOR	2C915A	1
2	CHROMATROL SWITCH MODEL 252	266394	2
3	CONTROL PANEL	0806D10	1
4	END CAPS	0806D05	2
5	CONTROL PANEL PLATE	0806D09	1
6	CONTROL PANEL BACK COVER PLT.	0806D11	1
7	HEAT TUNNEL BRACKET	0806D04	4
8	COVER PLATE	0806D02	1
9	MID-PLATE	0806D01	1
10	MID-PLATE BRACKET	0806D08	4
11	HEATER CORE BRACKET	0806D07	4 SETS
12	HEATER CORE	CR3000	2
13	ALUSPACER .5 DD X .25ID. X .375		6
14	LOWER PLATE	0806D03	1
15	SPACER PLATE	0806D06	1

MARBURG IND.
 TEL: 760-727-3762
 FAX: 760-727-5502
 VISTA, CA. 92084

UNLESS OTHERWISE SPECIFIED
 DIMENSIONS ARE IN INCHES
 TOLERANCES ON DIMENSIONS
 XX = ±.01
 XXX = ±.005
 TOL. ON ANGLES = ±1/2°

APPROVALS: DATE
 DRAWN: GALARCIN 12/09/02
 CHECKED: ENGR. K.STRUB
 FINISH: MATERIAL

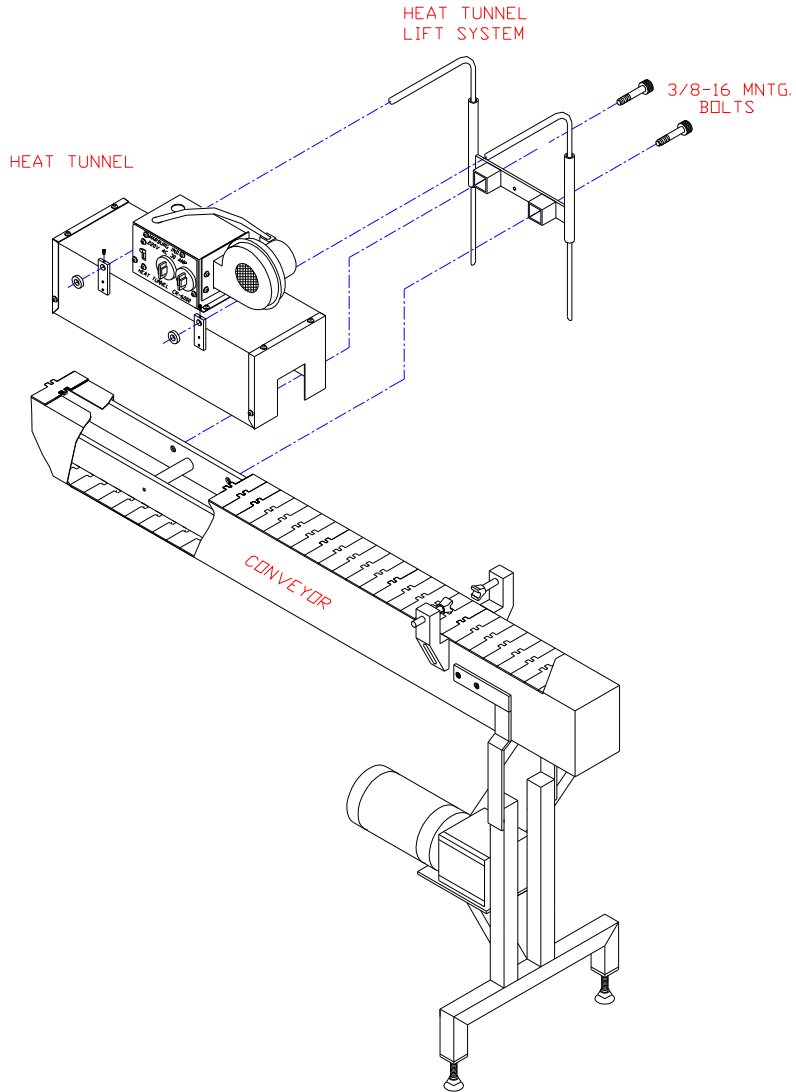
HEAT TUNNEL ASSY.
 PART NO. 0806A01
 SIZE A
 SCALE: NONE
 SHEET 1 OF 1

1. DE-BURR AND BREAK ALL SHARP EDGES .015 MIN.
 NOTES: UNLESS OTHERWISE SPECIFIED

HEAT TUNNEL MNTG. DIAGRAM

INFORMATION CONTAINED IN THIS DOCUMENT IS THE SOLE PROPERTY OF MARBURG INDUSTRIES. REPRODUCTION IN WHOLE OR IN PART IS PROHIBITED.

REVISIONS				
ZONE	REV	DESCRIPTION	DATE	APPROVED



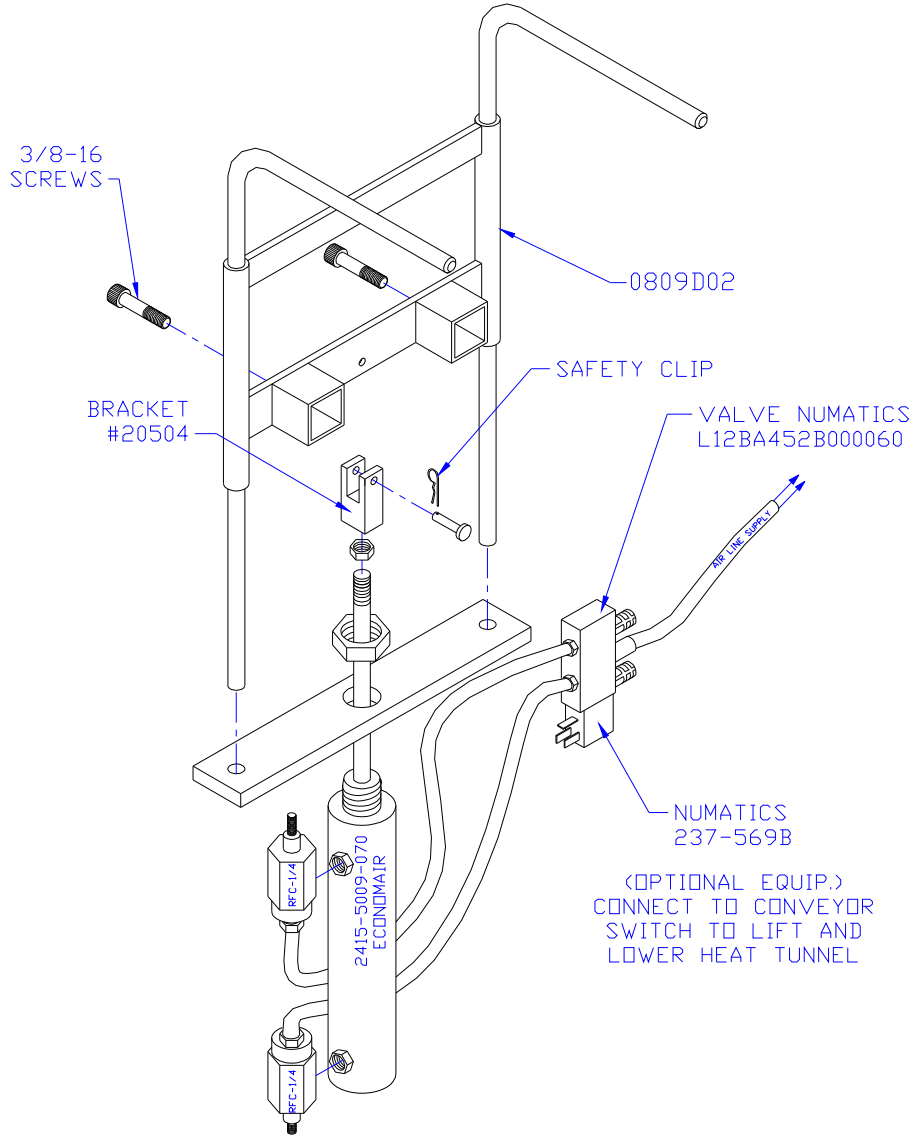
NOTES: UNLESS OTHERWISE SPECIFIED
 1. DE-BURR AND BREAK ALL SHARP EDGES .015 MIN.

<p>UNLESS OTHERWISE SPECIFIED DIMENSIONS ARE IN INCHES TOLERANCES ON DIMENSIONS</p> <p>XX = ±.01 XXX = ±.005</p> <p>TOL. ON ANGLES = ±1/2°</p>		<p>TEL: 760-727-3762 FAX: 760-727-5502 VISTA, CA. 92084</p>		
<h2 style="margin: 0;">HEAT TUNNEL MNTG. DIA.</h2>				
MATERIAL	SIZE A	ENGR K.STRUB	DWG NO. HEAT TUNNEL	REV A
FINISH	SCALE: NONE	DRAWN: G.ALARCON	DATE: 2/2/04	SHEET 1 OF 1

HEAT TUNNEL LIFT SYSTEM ASSEMBLY

INFORMATION CONTAINED IN THIS DOCUMENT IS THE SOLE PROPERTY OF MARBURG INDUSTRIES. REPRODUCTION IN WHOLE OR IN PART IS PROHIBITED.

REVISIONS				
ZONE	REV	DESCRIPTION	DATE	APPROVED



NOTES: UNLESS OTHERWISE SPECIFIED
 1. DE-BURR AND BREAK ALL SHARP EDGES .015 MIN.

UNLESS OTHERWISE SPECIFIED
 DIMENSIONS ARE IN INCHES
 TOLERANCES ON DIMENSIONS

 XX = ±.01
 XXX = ±.005
 TOL. ON ANGLES = ±1/2°



TEL: 760-727-3762
 FAX: 760-727-5502
 VISTA, CA. 92084

LIFT SYSTEM

MATERIAL S.S.	SIZE A	ENGR K.STRUB	DWG NO.	REV A
FINISH	SCALE: NONE	DRAWN: G.ALARCON	DATE: 12/16/03	SHEET 1 OF 1